

I. TASKS OF THE CHURCH

Mission Outreach (Q1)	Importance				
	Very Much	Much	Some	Little or None	Don't Know
Sharing the Gospel with the unchurched.	88%	10%	2%	1%	0%
Carrying out acts of love and service to people in need.	79%	20%	1%	0%	1%
Encouraging members to view their daily life and work as a place for ministry.	76%	23%	1%	0%	1%
Supporting the world mission of the church through study and giving.	51%	40%	7%	1%	2%
Encouraging members to understand and act on the relationship of the Christian faith to social, political, and economic issues.	29%	40%	23%	7%	1%
Involvement in community issues.	18%	37%	38%	5%	2%

Mission Outreach (Q2)	Satisfaction				
	Very Much	Much	Some	Little or None	Don't Know
Supporting the world mission of the church through study and giving.	29%	47%	21%	1%	3%
Carrying out acts of love and service to people in need.	28%	48%	21%	1%	2%
Encouraging members to view their daily life and work as a place for ministry.	19%	45%	33%	2%	2%
Sharing the Gospel with the unchurched.	14%	31%	46%	7%	1%
Involvement in community issues.	8%	33%	48%	9%	3%
Encouraging members to understand and act on the relationship of the Christian faith to social, political, and economic issues.	8%	32%	45%	12%	2%

Mission Outreach (Q3)	Strongly Agree	Slightly Agree	Slightly Disagree	Strongly Disagree	Don't Know
I do not reach out and invite people to QSCC as much as I could.	55%	37%	4%	2%	2%
Most QSCC members do not reach out and invite people often enough.	41%	40%	11%	1%	7%
QSCC provides opportunities for me to reach out to the unchurched and invite them to QSCC.	33%	50%	11%	4%	3%
I personally do not feel comfortable inviting people to QSCC because of my own fears in reaching out.	16%	39%	26%	17%	2%
I do not feel comfortable inviting people to QSCC because I do not feel that QSCC is a comfortable environment for visitors.	7%	24%	24%	43%	2%

Worship and Lord's Supper (Q4)	Importance				
	Very Much	Much	Some	Little or None	Don't Know
Providing worship that nurtures, uplifts, and strengthens individuals for daily living.	81%	15%	2%	1%	1%
Providing worship that deepens members' understanding of the meaning of the Bible, the Church, and Christianity.	79%	16%	4%	0%	2%
Providing worship that challenges members to connect the Gospel to the issues and situations they face in the world.	64%	24%	9%	1%	2%
Providing worship that appeals to the unchurched in their search for spirituality.	57%	32%	7%	3%	1%
Providing worship that helps members share each other's faith, doubt, joy and sorrow.	56%	33%	7%	1%	3%
Providing worship expressing the Gospel in contemporary language and ways.	39%	35%	20%	5%	1%
Providing worship that reaffirms our connection to the Church of Christ fellowship, e.g., songs, prayers, format, ect.	26%	16%	28%	30%	1%

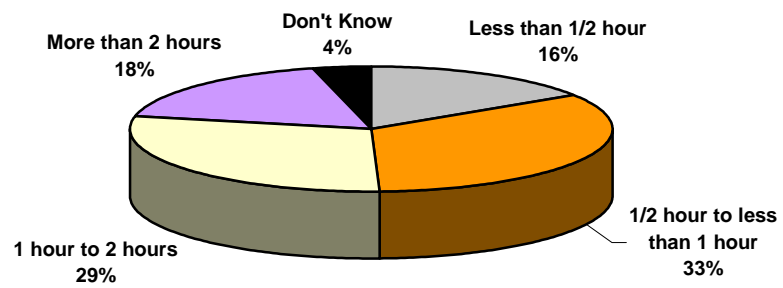
Worship and Lord's Supper (Q6)	Satisfaction				
	Very Much	Much	Some	Little or None	Don't Know
Providing worship that nurtures, uplifts, and strengthens individuals for daily living.	51%	38%	8%	1%	2%
Providing worship that deepens members' understanding of the meaning of the Bible, the Church, and Christianity.	40%	48%	9%	1%	2%
Providing worship that challenges members to connect the Gospel to the issues and situations they face in the world.	34%	43%	18%	2%	2%
Providing worship expressing the Gospel in contemporary language and ways.	31%	37%	25%	5%	3%
Providing worship that helps members share each other's faith, doubt, joy and sorrow.	28%	40%	24%	6%	3%
Providing worship that reaffirms our connection to the Church of Christ fellowship, e.g., songs, prayers, format, ect.	24%	38%	28%	9%	3%
Providing worship that appeals to the unchurched in their search for spirituality.	18%	43%	30%	5%	4%

Spiritual Development (Q7)	Importance				
	Very Much	Much	Some	Little or None	Don't Know
Helping members develop a stronger personal relationship with God.	83%	13%	2%	1%	2%
Providing guidance and growth for members' spiritual lives.	77%	20%	2%	0%	2%
Helping members develop practices of prayer and meditation.	61%	30%	6%	1%	2%
Providing education to equip members on how to effectively share their faith with lost people.	61%	28%	7%	2%	3%
Helping members encounter God through service to others.	60%	31%	6%	1%	3%
Providing times to educate the unchurched about spiritual development.	58%	30%	8%	2%	3%

Spiritual Development (Q8)	Satisfaction				
	Very Much	Much	Some	Little or None	Don't Know
Providing guidance and growth for members' spiritual lives.	17%	45%	32%	3%	4%
Helping members develop a stronger personal relationship with God.	15%	51%	29%	2%	4%
Helping members encounter God through service to others.	14%	42%	35%	5%	4%
Helping members develop practices of prayer and meditation.	8%	33%	44%	11%	4%
Providing times to educate the unchurched about spiritual development.	7%	23%	44%	20%	5%
Providing education to equip members on how to effectively share their faith with lost people.	7%	25%	48%	15%	6%

Spiritual Development (Q9)	
I have a private devotional/study time _____ times per week.	
Average	3%
0 times	13%
1 time	11%
2 times	18%
3-5 times	42%
6-10 times	16%
11 or more times	1%

**How much time do you spend in focused prayer
per week? (Q10)**



Spiritual Development (Q11)	
I give about _____% of my gross income to QSCC and other ministries.	
Average	9%
0%	1%
1-5%	22%
6-9%	17%
10%	41%
More than 10%	18%

Caring and Community (Q12)	Importance				
	Very Much	Much	Some	Little or None	Don't Know
Encouraging members to care for, pray for, and support one another.	74%	24%	1%	0%	1%
Elder's care and concern for members and their problems.	67%	28%	4%	0%	2%
Developing fellowship opportunities in which members can be with and get to know one another.	55%	38%	6%	0%	2%
Providing a caring ministry to sick and shut-in persons.	51%	39%	8%	1%	2%
Minister's care and concern for members and their problems.	47%	41%	11%	0%	1%

Caring and Community (Q13)	Satisfaction				
	Very Much	Much	Some	Little or None	Don't Know
Encouraging members to care for, pray for, and support one another.	31%	45%	22%	1%	2%
Minister's care and concern for members and their problems.	24%	42%	27%	4%	4%
Elder's care and concern for members and their problems.	23%	42%	26%	5%	4%
Developing fellowship opportunities in which members can be with and get to know one another.	22%	37%	34%	4%	2%
Providing a caring ministry to sick and shut-in persons.	11%	32%	40%	11%	7%

Stewardship-Giving of Time and Resources (Q14)	Importance				
	Very Much	Much	Some	Little or None	Don't Know
Using contributions effectively in doing the work of the kingdom.	74%	22%	2%	1%	1%
Helping members understand a biblical view of their money, time, and talents in all areas of their lives as expressions of Christian stewardship.	62%	31%	5%	1%	2%
Educating and challenging members to financially support the work of the church.	45%	44%	10%	1%	1%

Stewardship-Giving of Time and Resources (Q15)	Satisfaction				
	Very Much	Much	Some	Little or None	Don't Know
Using contributions effectively in doing the work of the kingdom.	26%	43%	25%	2%	4%
Educating and challenging members to financially support the work of the church.	18%	45%	31%	4%	2%
Helping members understand a biblical view of their money, time, and talents in all areas of their lives as expressions of Christian stewardship.	14%	40%	35%	8%	3%

Education (Q16)	Importance				
	Very Much	Much	Some	Little or None	Don't Know
Teaching about the Bible, the Church, and Christianity.	82%	16%	1%	0%	1%
Providing education that encourages an open search for faith that provides meaning and purpose for life.	71%	23%	4%	0%	2%
Teaching that is directed to the unchurched to equip them for real life issues.	57%	28%	11%	2%	2%
Providing fellowship opportunities to be together in a Christian context.	48%	38%	12%	1%	1%

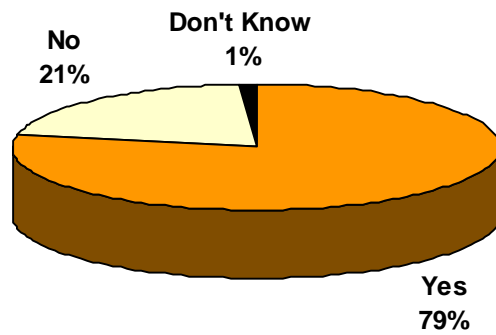
Education (Q17)	Satisfaction				
	Very Much	Much	Some	Little or None	Don't Know
Teaching about the Bible, the Church, and Christianity.	32%	42%	21%	2%	3%
Providing fellowship opportunities to be together in a Christian context.	22%	38%	35%	5%	2%
Providing education that encourages an open search for faith that provides meaning and purpose for life.	21%	42%	29%	5%	4%
Teaching that is directed to the unchurched to equip them for real life issues.	9%	28%	42%	16%	5%

II. ORGANIZATIONAL CHARACTERISTICS

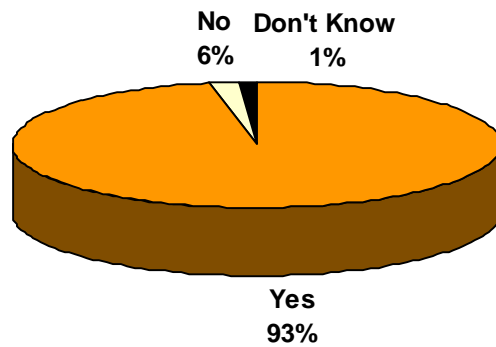
Communication (Q18)	Strongly Agree	Agree	Disagree	Strongly Disagree	Don't Know
There is ample opportunity for members to make known their concerns and hopes for the congregation to Elders and other leaders.	26%	52%	15%	4%	3%
Members are well informed about activities taking place in the congregation.	22%	50%	23%	5%	2%
The decision making process is clearly communicated to the entire church when important decisions are being made.	20%	43%	24%	12%	2%
Clear expectations are communicated to members.	11%	45%	31%	9%	4%
Members are well informed about the concerns, needs and activities of the neighborhood/community around the church.	4%	23%	51%	14%	9%
The community around the church is well informed about the activities taking place in the congregation.	4%	30%	37%	10%	19%

Communication (Q19)					
QSCC activities and events can be effectively communicated through:	Strongly Agree	Agree	Disagree	Strongly Disagree	Don't Know
Announcements during the worship service	37%	48%	8%	6%	2%
Announcements at Connections Group Meetings	28%	52%	14%	2%	4%
Announcements during the Sunday morning classes	25%	48%	21%	3%	3%
Announcements through the QSCC web site	24%	43%	22%	6%	6%

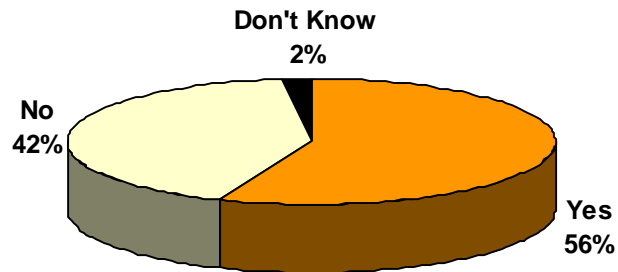
Does the Sunday sheet provide enough information to keep you informed?(Q20a)



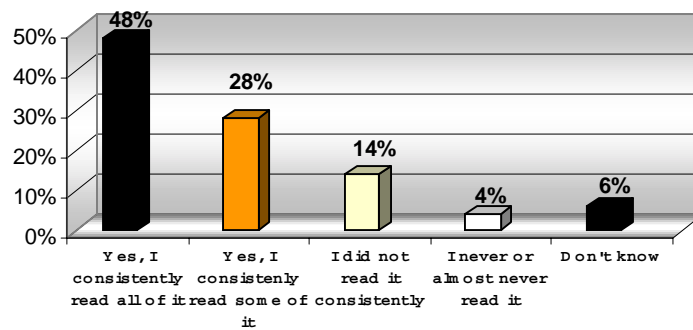
Do you consistently read the Sunday Sheet, which is available during Sunday worship services?(Q20b)



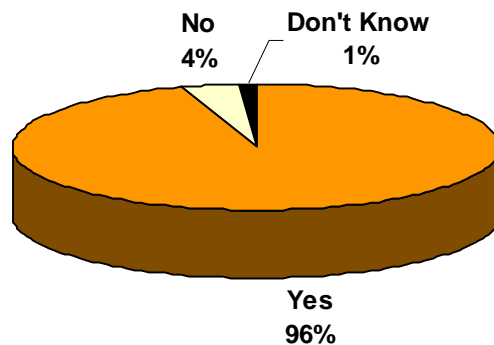
Do you read the announcements projected on the screens before the service begins?(Q20c)



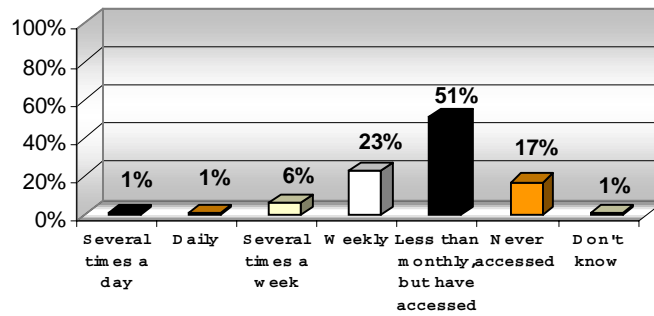
Did you read the church bulletin that was formerly mailed to your home? (Q21)



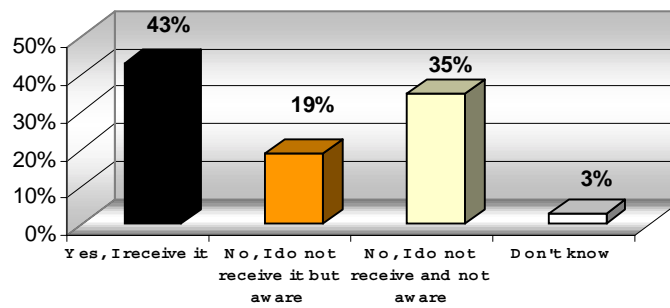
Do you have Internet access at home, work, or some other location?(Q22)



Do you access the QSCC web site? (Q23)



Do you receive the QSCC email? (Q24)



Assessment and Planning (Q25)	Strongly Agree	Agree	Disagree	Strongly Disagree	Don't Know
The congregation has a clear statement of goals and a plan for meeting them.	8%	40%	33%	9%	11%
Study of the needs of the congregation and the community is regularly undertaken as the basis for church planning.	4%	32%	32%	9%	23%
Committee and group chairpersons regularly attempt to discover how members feel about the way their committee or group is functioning.	3%	23%	30%	14%	31%
There is a regular process for members to give feedback to the Elders about their services.	2%	23%	41%	15%	19%
There is a regular process for members to give feedback to the ministry staff about their services.	2%	18%	43%	17%	19%

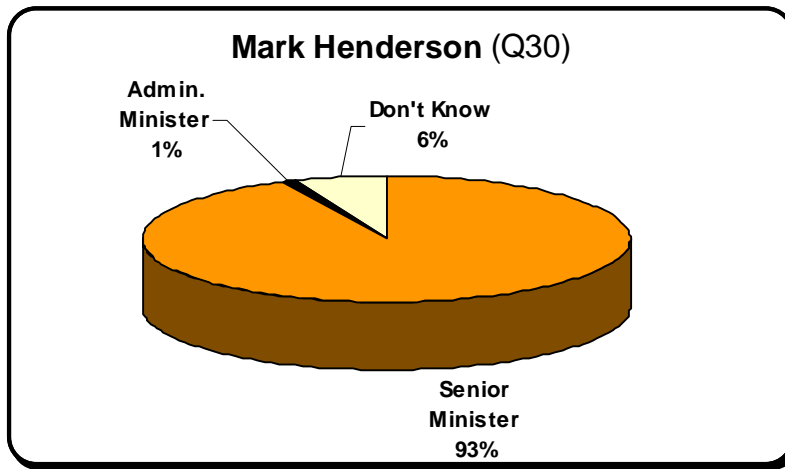
Decision Making (Q26)	Strongly Agree	Agree	Disagree	Strongly Disagree	Don't Know
The theological and biblical implications of important decisions are always thoroughly and explicitly discussed.	17%	43%	23%	7%	10%
Some members seem to have a lot more influence over policy than they should.	15%	26%	28%	7%	25%
Important decisions about the life of the church are rarely made without being openly discussed by the broad spectrum of church leaders and members.	12%	46%	27%	7%	9%
Those who make important decisions about the life of our church consistently represent the thinking of the majority of members.	8%	48%	23%	5%	16%
When making a decision, maintaining Church of Christ traditions is more important than spiritual freedom.	2%	12%	33%	43%	9%

Decision Making (Q27)	Strongly Agree	Agree	Disagree	Strongly Disagree	Don't Know
When a decision that I disagree with is presented to the congregation, I voice my displeasure to others, e.g., leadership, friends.	7%	54%	24%	10%	5%
When a decision that I disagree with is presented to the congregation, I consider leaving for another congregation.	2%	13%	43%	38%	4%
When a decision that I disagree with is presented to the congregation, it affects my relationship with Jesus Christ.	2%	7%	47%	42%	3%

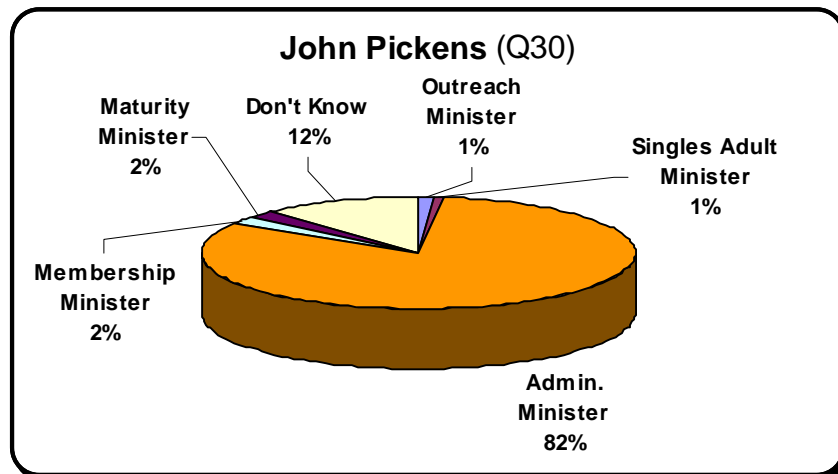
Resource Development (Q28)	Strongly Agree	Agree	Disagree	Strongly Disagree	Don't Know
It is important for our ministry staff to participate regularly in continuing education.	33%	55%	4%	1%	7%
Members are encouraged to discover their particular gifts for ministry and service to the church.	7%	55%	26%	5%	6%
The congregation has an effective program of new member recruitment.	7%	38%	36%	4%	14%
Ministry leaders are provided the training they need for their committee and task assignments.	5%	43%	14%	4%	33%
Members are provided with the necessary training and resources to develop their gifts and talents.	4%	30%	43%	10%	14%
The congregation has an effective program of incorporating all members' talents and gifts into church ministries.	4%	36%	40%	12%	8%

Church Identity (Q29)	Strongly Agree	Agree	Disagree	Strongly Disagree	Don't Know
When I think of this congregation, I usually think of "we" rather than "they."	40%	49%	8%	2%	2%
My personal commitment in this congregation is high.	33%	50%	12%	2%	3%
My level of participation in this congregation is high.	22%	41%	30%	4%	3%
I am satisfied with my personal commitment and participation in this congregation.	21%	48%	24%	4%	4%
There are clear expectations for being a member of this church (e.g., belief, participation, giving, etc.)	11%	48%	31%	4%	5%
There is common agreement among members regarding the spiritual principles for which our congregation stands.	6%	54%	25%	5%	10%

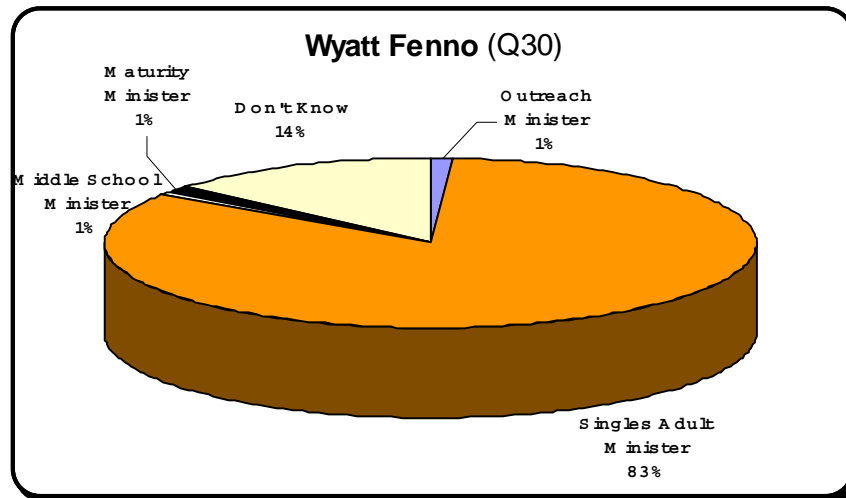
Match the minister with his/her duties



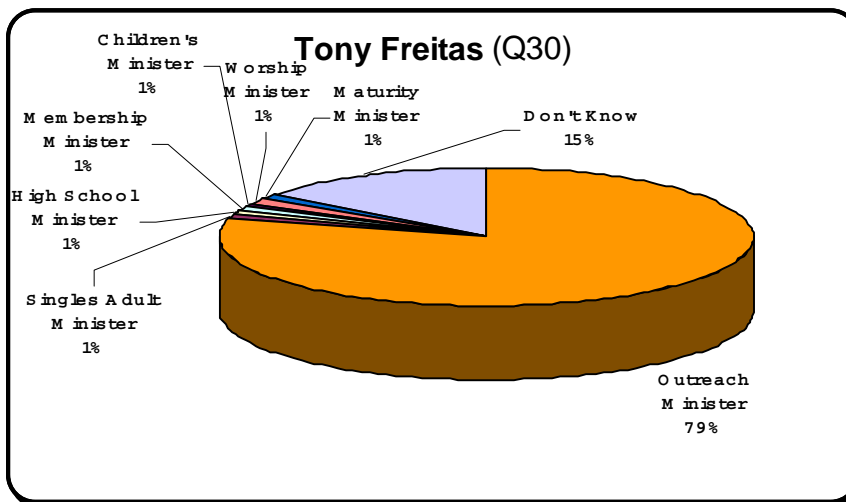
Match the minister with his/her duties



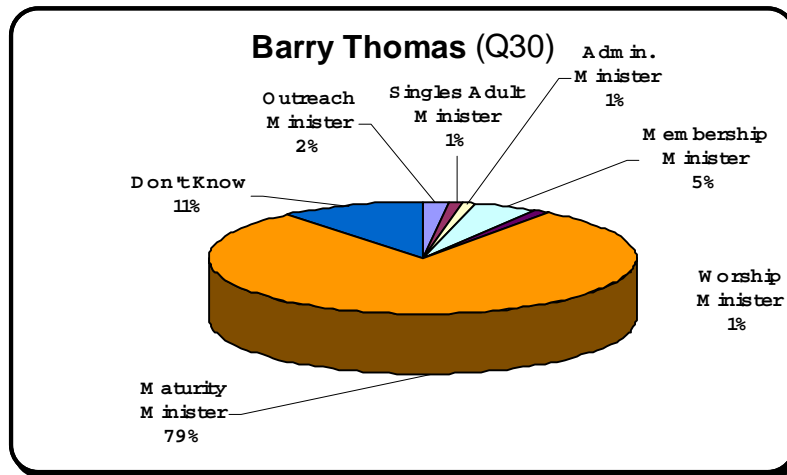
Match the minister with his/her duties



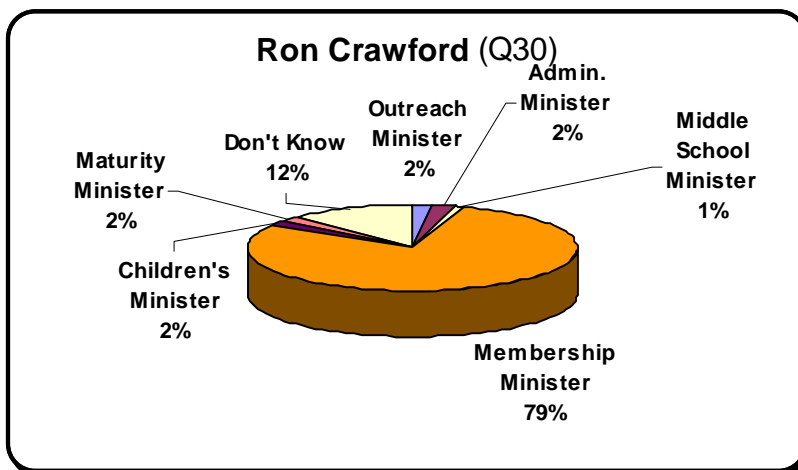
Match the minister with his/her duties



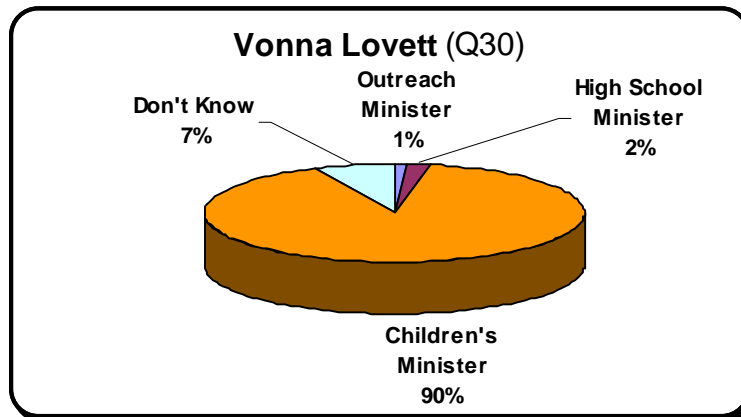
Match the minister with his/her duties



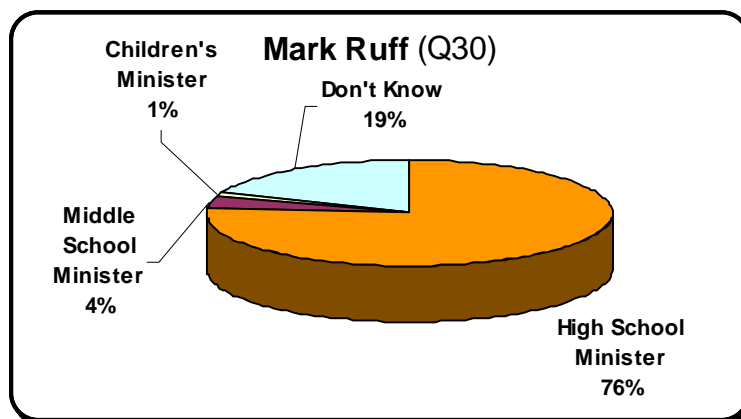
Match the minister with his/her duties



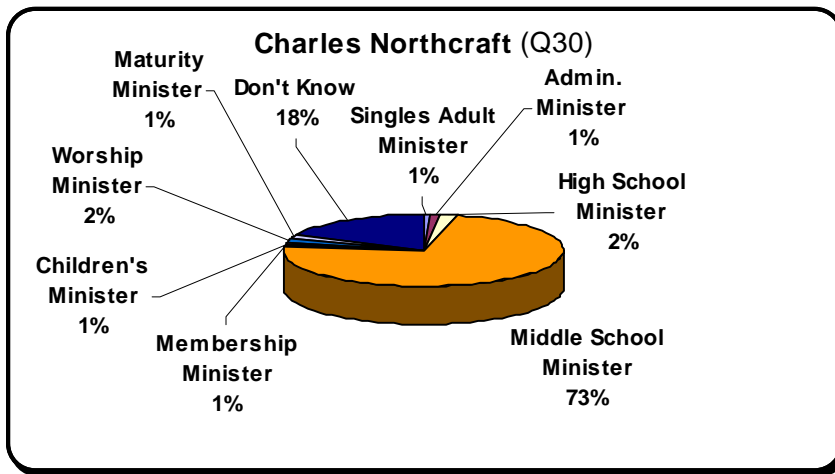
Match the minister with his/her duties



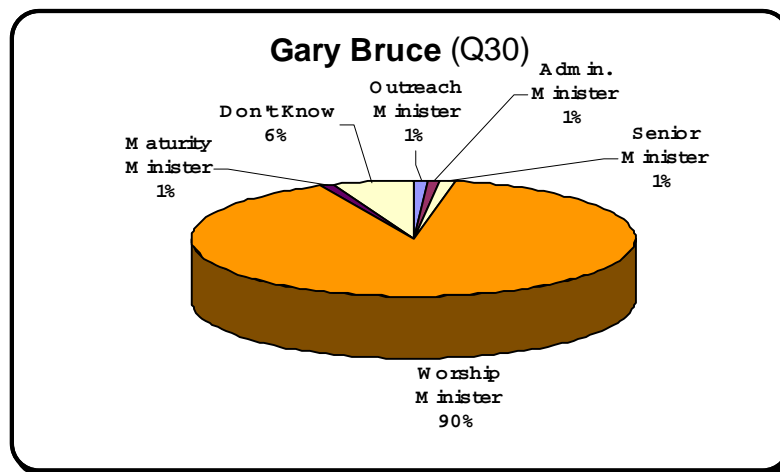
Match the minister with his/her duties



Match the minister with his/her duties



Match the minister with his/her duties

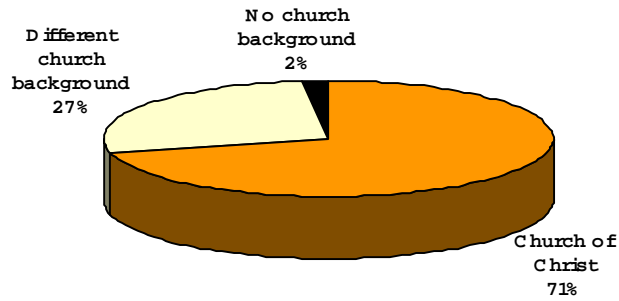


Tasks of Elders (Q32)		
Please rank in order of priority from 1 (highest) to 14 (lowest) the following tasks of the Elders.	% Ranked #1	% Ranked #1-5
Attending to the spiritual development of members	31%	75%
Being careful and encouraging (Shepherding)	26%	69%
Teaching the Word of God with urgency and conviction	19%	57%
Vision for the future	7%	46%
Developing a strong sense of community among members	5%	42%
Bringing new members into the church fellowship	3%	15%
Stewardship development	2%	28%
Visiting the sick and bereaved	2%	32%
Mentoring the ministry staff	1%	29%
Overseeing and supporting Christian education for all ages	1%	26%
Supporting missions and outreach	1%	20%
Involving members in planning, participating in, and leading church events	1%	14%
Involvement in local community activities, issues, and problems	1%	4%
Holding before members critical issues of social justice and concern	0%	9%

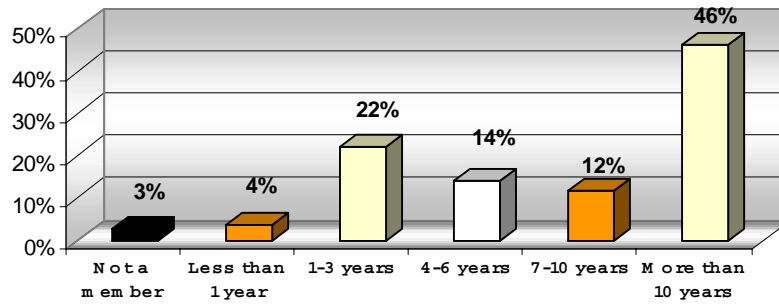
Your Church Participation (Q33,Q34)	Heard Of	Participated In
Missions Sunday, February 2001	94%	88%
Conquering Debt Seminar, March 2001	80%	17%
Town Hall meeting, March 2002	84%	60%
Women's Night Out (various dates)	80%	19%
Various ministry retreats	94%	46%
Honduras fund raisers, April & May 2001	87%	60%
VBS, June 2001	92%	42%
Freedom & Faith Festival, July 2001	95%	73%
Men's Retreat, September 2001	92%	17%
Worship Nite, Saturday nights	96%	42%
Women's Retreat, September 2001	91%	19%
Quail Springs Golf Tournament, October 2001	94%	14%
Ministry Fair, November 2001	92%	69%
Various blood drives	98%	37%
Christmas Store donations & set-up, December 2001	92%	62%
Cross & Crown donations & volunteer	97%	80%
Church Talent Show (attended), December 2001	93%	52%
Corporate Meeting, February 2002	92%	62%
Missions Sunday, February 2002	96%	88%
Maria Durso seminar, March 2002	87%	40%
VBS, June 2002	97%	53%
Freedom & Faith Festival, July 2002	98%	75%
Had picture taken for directory	89%	74%
Check out book from QSCC Library	80%	26%

Your Church Participation (Q35)	%
Which of the following have you done in the past 12 months?	
Donated	93%
Been to a Connection Group	87%
Invited someone to QSCC for a Sunday morning service	71%
Tithed (10% gross income)	62%
Invited someone to QSCC for a Connections Group meeting	57%
Attended service to another church in the Oklahoma City area	54%
Taught Sunday morning children's classes	33%
Taught Wednesday evening children's classes	21%
Invited someone to QSCC for a Wednesday evening service	18%
Taught Sunday morning adult classes	9%
Taught Wednesday evening adult classes	8%

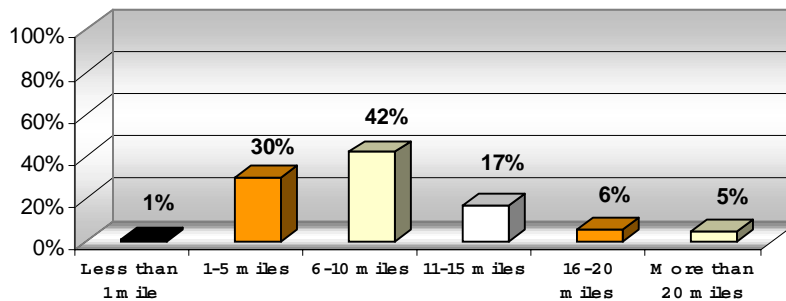
Did you "grow-up in the Church of Christ or come from a different background? (Q36)



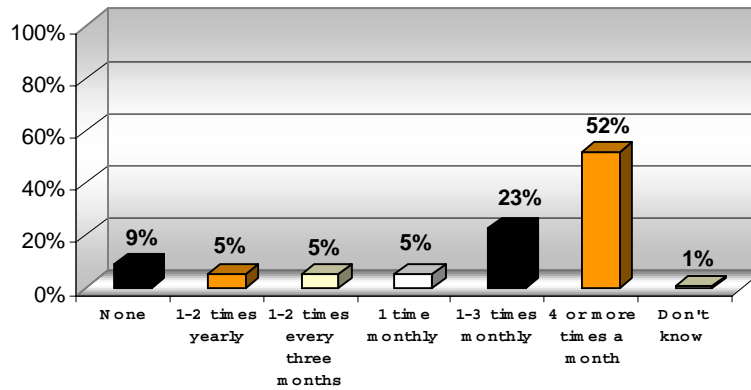
How long have you been a member of QSCC? (Q37)



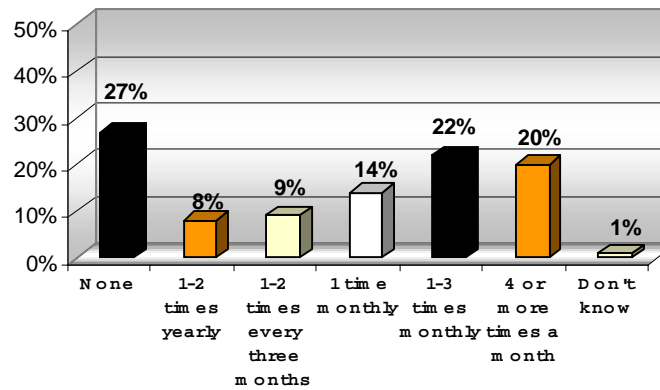
How far do you live from the QSCC building? (Q38)



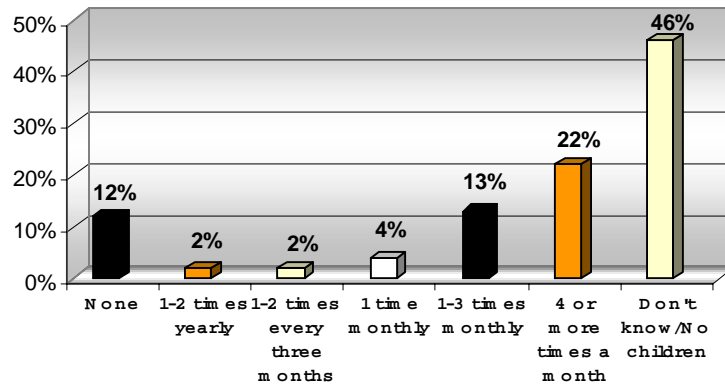
On average, about how many times did you attend Sunday morning class in the past year? (Q39)



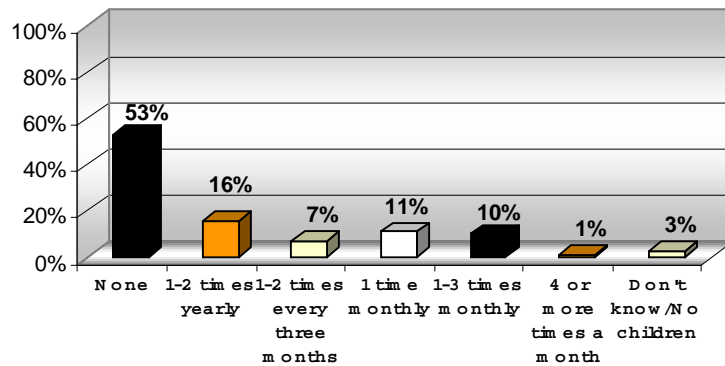
On average, about how many times did you attend Wednesday night class in the past year? (Q40)



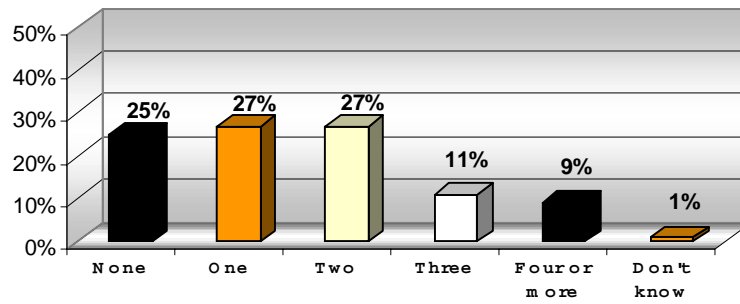
On average, how many times do your children attend class on Wednesday nights? (Q41)



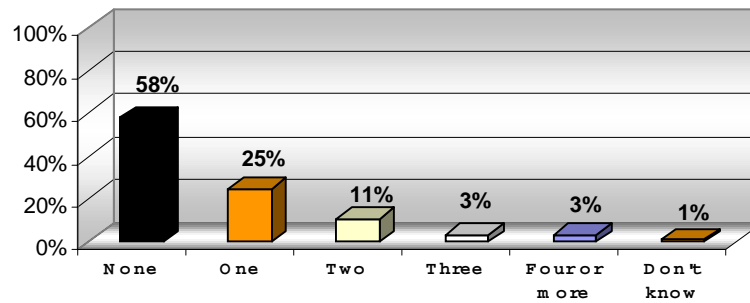
On the average, about how many times do you attend church meetings instead of classes on Wednesday nights? (Q42)



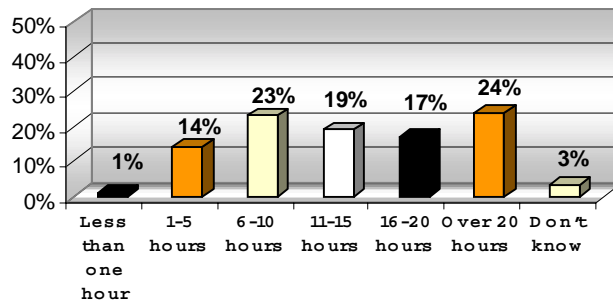
In how many congregational groups and/or committees do you participate? (Q43)



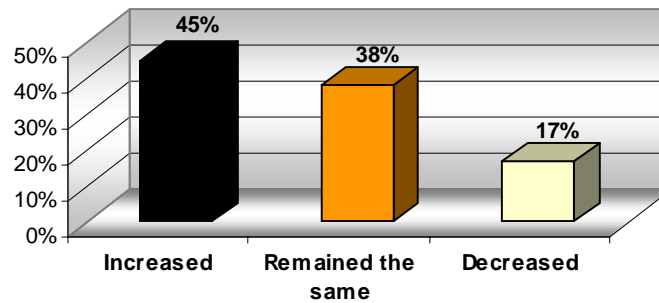
How many leadership positions, if any, do you hold in these activities? (Q44)



How much time would you say you spend during the course of an average month in church activities? (Q48)



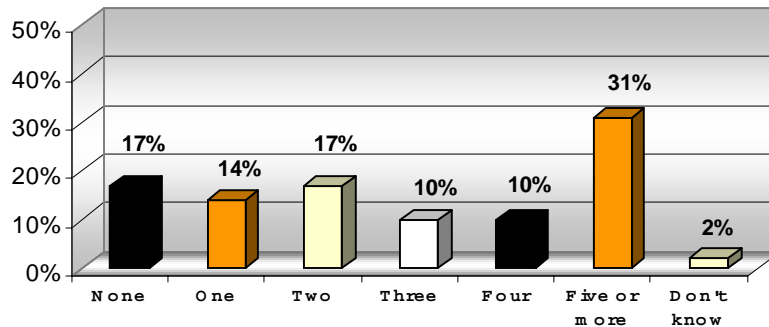
Has your involvement in the congregation increased, decreased, or remained about the same in the last three years? (Q45)



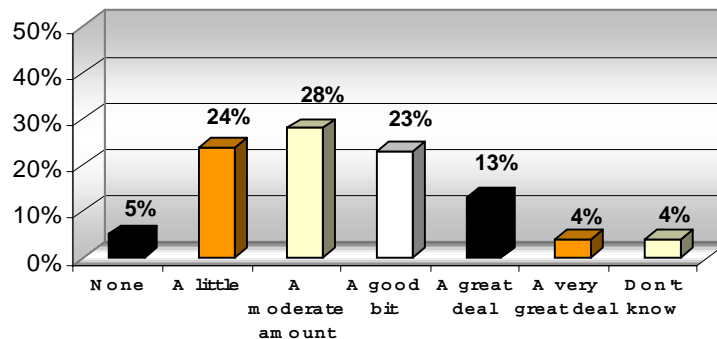
Your Church Participation (Q46)	
If your participation has <i>increased</i>, which one of the following is the most important reason for that:	%
Accepted office or other responsibility in the church	24%
Stronger faith	20%
Because of children	19%
Stronger relationship	15%
Other	9%
More time available	7%
More positive attitude toward the church	6%
Better health	1%

Your Church Participation (Q47)	
If your participation has <i>decreased</i>, which one of the following is the most important reason for that:	%
Less time available	30%
More negative attitude toward the church	27%
Other	25%
Health problems	9%
Decreased faith	5%
Children are less involved	2%
Given up office or other responsibility in the church	2%

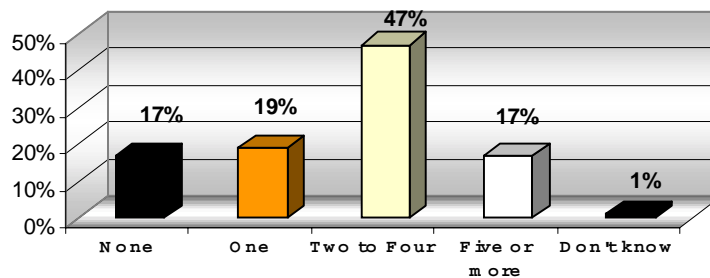
Think for a moment of your five closest friends with whom you have social and recreational life. How many are members of this congregation? (Q49)



Suppose your congregation were in real danger of closing because of financial problems. How much would you be willing to increase our giving to the church in order to prevent this from happening? (Q50)



How many persons or families have you invited to visit Quail in the past year? (Q51)



Personal Beliefs (Q52)	%
Which one of the following best expresses your belief about God?	
God is in the world and is in every person, thing, and event.	60%
God is constantly at work in the world from "above" directing people, nations, and events.	32%
Although God has and can act in history and communicate with persons directly, it is not something that happens very often.	2%
God is the creator of an orderly world, but does not now guide or intervene in its course of affairs.	1%
I do not believe in God.	1%
I really don't know what to believe about God.	1%
I do not believe in a creating and saving God, but I do believe in a higher power of some kind.	0%
Don't know	4%

Personal Beliefs (Q53)	%
Which one of the following best expresses your view of the Bible?	
The Bible is the actual Word of God and is to be taken as the final authority for Christians.	55%
The Bible is the inspired Word of God and its basic moral and religious teachings are clear and true, even if it does contain some human error.	23%
The Bible, which is the Word of God, says what it means and means what it says. It is really pretty simple to understand if you are just honest.	17%
The Bible is a valuable book because it was written by wise and good persons, but I do not believe it is actually God's Word.	1%
The Bible is the record of many different persons' response to God. Because of this fact, persons and churches today are often times forced to adjust the Bible's basic moral and religious teachings for themselves.	1%
The Bible was written by men who lived so long ago that it is little value today.	0%
Don't know	4%

Personal Beliefs (Q54) Which one of the following best expresses your belief about sin and salvation?	%
One thing humans have in common is that all are sinners and are lost unless they receive God's grace through a faith, which repents of sin.	96%
I believe all people are inherently good, and to the extent sin and salvation have meaning to all, it has to do with people realizing or not realizing their human potential for good.	1%
All people are sinful and if they are to be saved must earn it through living a good life, devoted to God.	1%
Sin and salvation really don't have much meaning to me personally.	0%
Sin is a helpful way of talking about people's capacity to harm themselves and others, and salvation is a helpful way of talking about hope for a better tomorrow.	0%
Although people are sinful, all people participate in God's salvation regardless of how they live their life, even if they do not believe in Christ.	0%
Don't know	2%

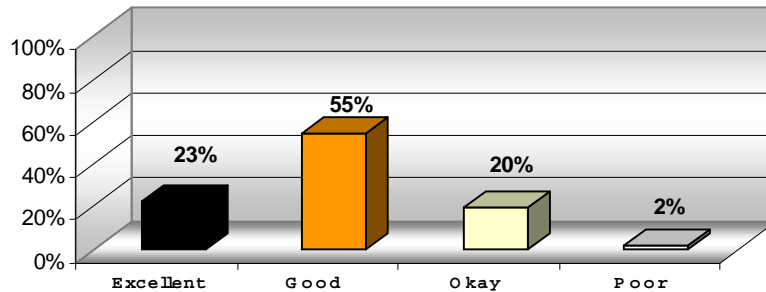
Personal Beliefs (Q55).....CORRECTED	%
Which one of the following best expresses your belief about the use of instrumental music in praise and worship?	
I believe we should not use instruments in our Sunday corporate worship out of respect for our tradition in the Church of Christ, but we should be free to use them in any other ministry area.	35%
Using instruments is not a sin, but my personal preference is to worship without instruments.	31%
I prefer instrumental worship and would be in favor of including instruments in our Sunday worship.	14%
I don't have any problem with using instruments, but I wouldn't want to use them because someone else might be upset by it.	7%
Using instruments is not a sin, but we shouldn't use them because of our tradition in the Church of Christ.	5%
I don't know whether using instruments is a sin, so we should avoid using them to be safe.	4%
The use of instruments in praise and worship is a sin, so we shouldn't use it in any of our church activities.	2%
Don't know	2%

Personal Beliefs (Q56)	%
Place a check mark by each true statement.	
I know that I am in a saved relationship with God.	92%
I believe baptism should be by immersion.	91%
I received the forgiveness of sins when I was immersed into Christ.	88%
I received the Holy Spirit when I was immersed into Christ.	87%
In decision-making the fact that Christ is my Lord is the strongest factor in my decision.	78%
I would like to be more active and involved in the congregation.	45%
I believe that since only God is the judge we can't know if others have to be baptized to be saved.	45%
I believe one can become a Christian by asking Jesus to come into his/her heart in prayer to God.	41%
I believe one must be immersed to be saved.	31%
I would like to serve in a leadership capacity other than the Eldership.	24%
I would like to eventually serve as an Elder in this congregation.	10%
I don't know if I have ever received the Holy Spirit and the forgiveness of my sins.	0%

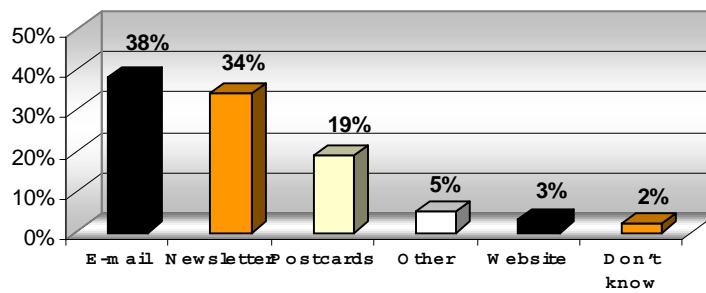
Bible Images (Q57)					
The Bible presents a variety of images of faith in action. How descriptive of your current journey is each of the following passages?	Very	Some- what	A little	Not at all	Don't Know
Love the Lord with all your heart...and your neighbor as yourself. (Matt. 22)	55%	35%	7%	0%	4%
The Lord is my shepherd, I shall not want...I will fear no evil for you are with me...(Ps. 23)	53%	33%	10%	1%	4%
Come unto me all you who are heavy laden and I will give you rest. (Matt. 11)	49%	32%	13%	2%	4%
What does the Lord require of me, but to do justice, to love mercy, and to walk humbly with him? (Micah 6)	42%	44%	8%	1%	5%
As much as you have done it to one of these the least of my people, you have done it to me. (Matt.25)	33%	40%	18%	3%	6%
Do not love the world or the things in the world...all that is in the world is not of the Father...and passes away. (1 John 2)	29%	47%	18%	2%	5%
Day and night you punished me, Lord; then I confessed my sins to you...The wicked will have to suffer, but those who trust in the Lord are protected by God's constant love. (Ps. 32)	23%	36%	21%	13%	7%
Go therefore and make disciples. (Matt. 28)	17%	36%	37%	7%	4%
How that I knew where I might find God. (Job 23)	11%	20%	23%	35%	11%
The best thing people can do is eat and drink and enjoy what they have earned. Even this comes from God who gives happiness to those who please him. (Ecc.2)	11%	39%	28%	17%	6%

VII. YOUTH MINISTRY

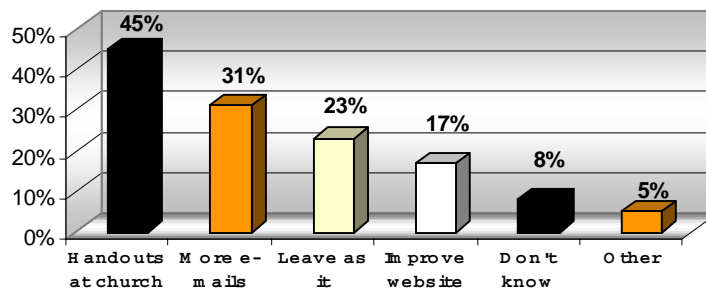
How would you rate overall communication within the youth ministry? (Q59)



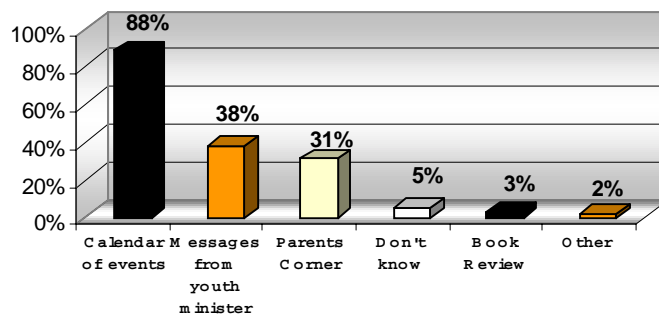
What is the most effective communication tool for you? (Q60)



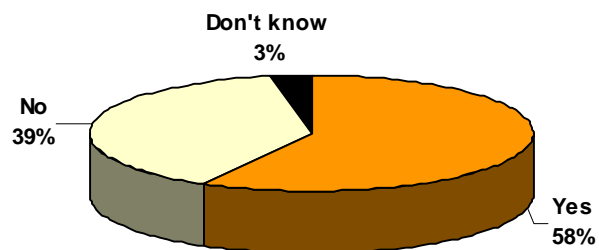
How would you suggest improving communication? (Check all that apply) (Q62)



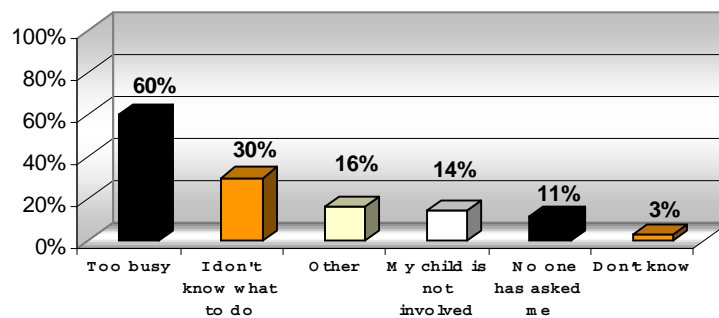
What aspects of our newsletter are effective in communicating to you? (Check all that apply) (Q63)



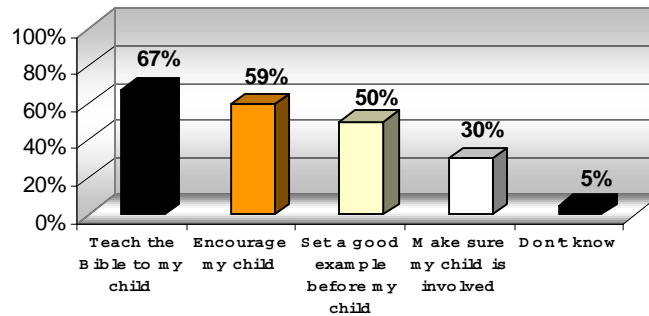
Would you like to be more involved with the youth ministry? (Q61)



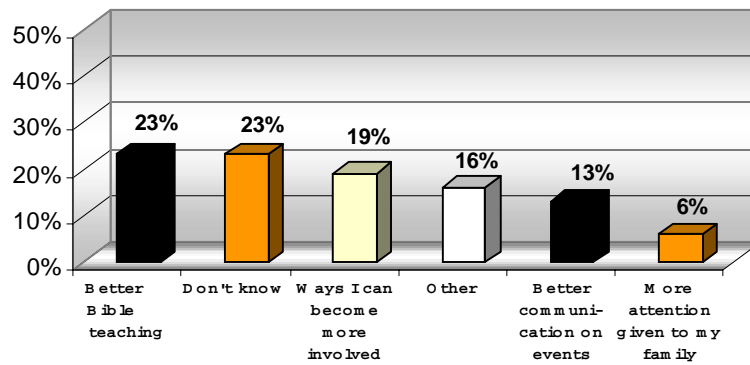
If yes, why are you not as involved as you would like to be? (Check all that apply) (Q65)



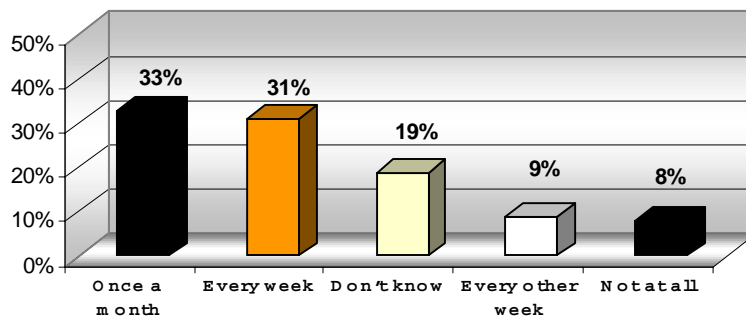
**What are your expectations of the youth ministers?
(Q67)**



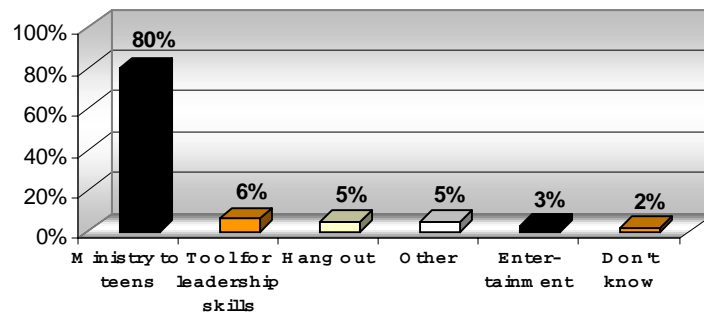
**What do you see as an area that most needs improving?
(Q64)**



Would you support a Sunday or Wednesday Night Praise and discipling time for your student? (Q68)

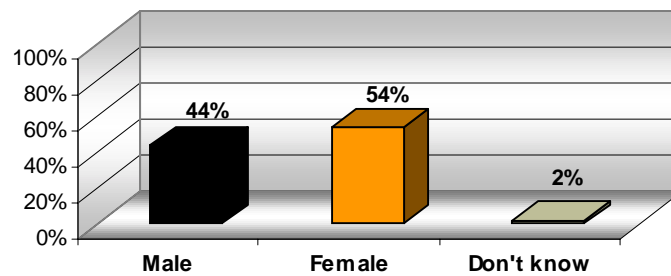


What do you see the MAIN purpose of our new youth room being? (Q66)

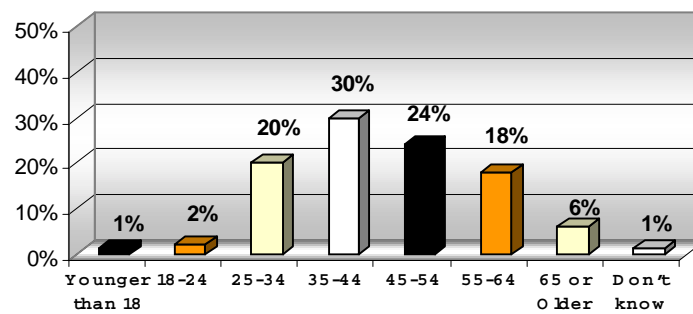


VII. FINALLY, WE NEED A FEW ITEMS OF BACKGROUND INFORMATION ABOUT YOURSELF.

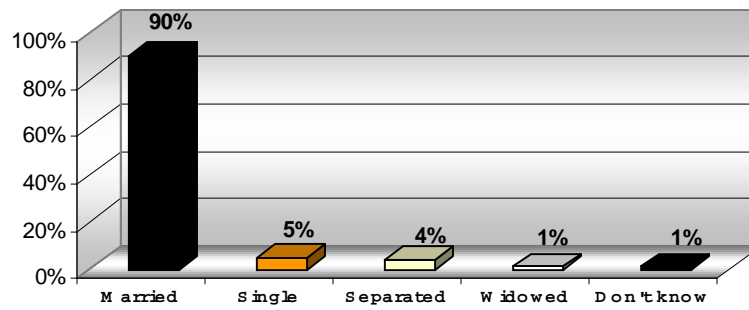
Gender (Q70)



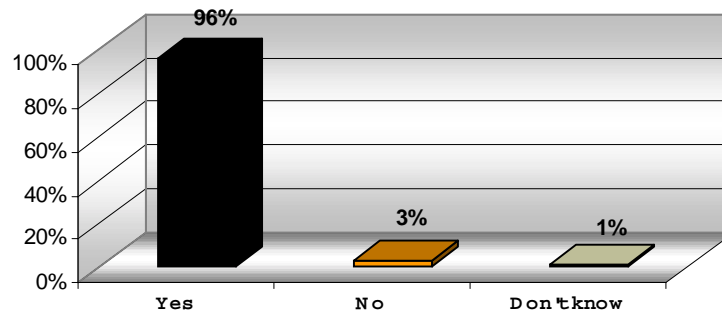
Age (Q71)



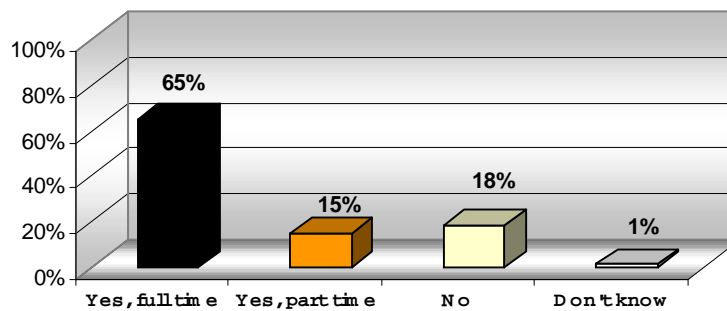
Marital status (Q69)



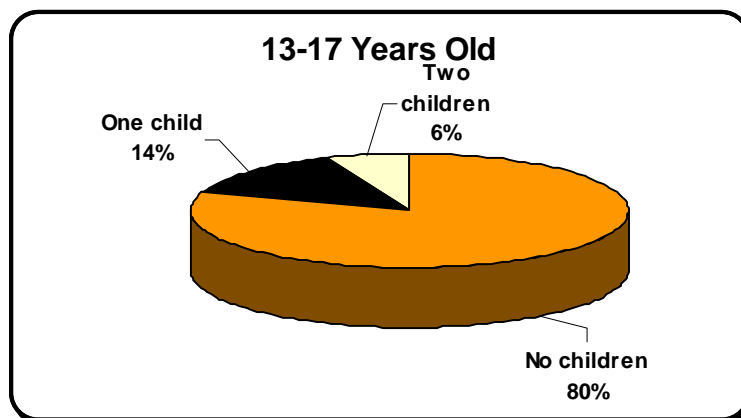
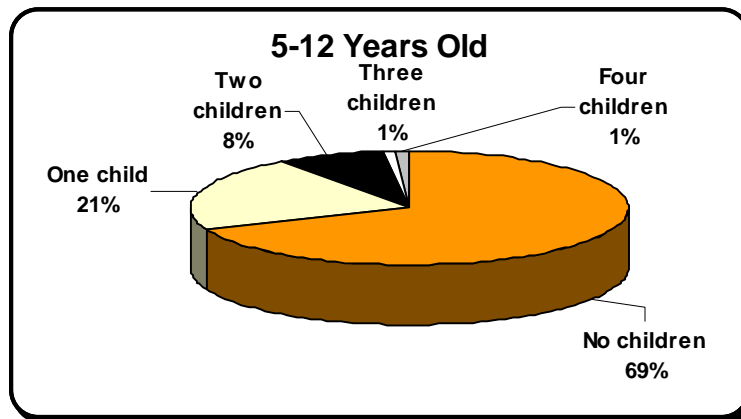
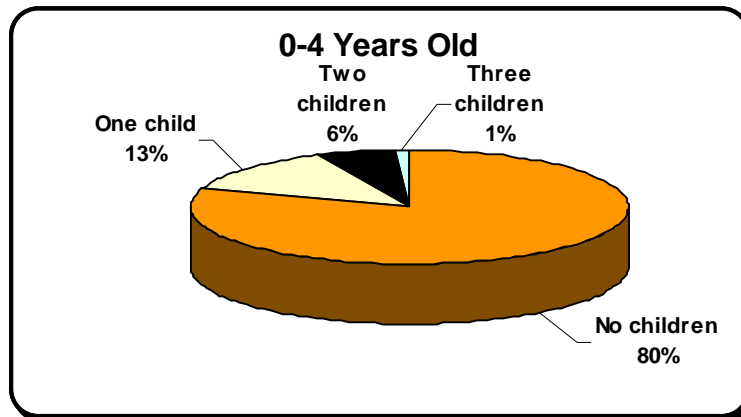
If married, is your spouse a member of this church? (Q72)



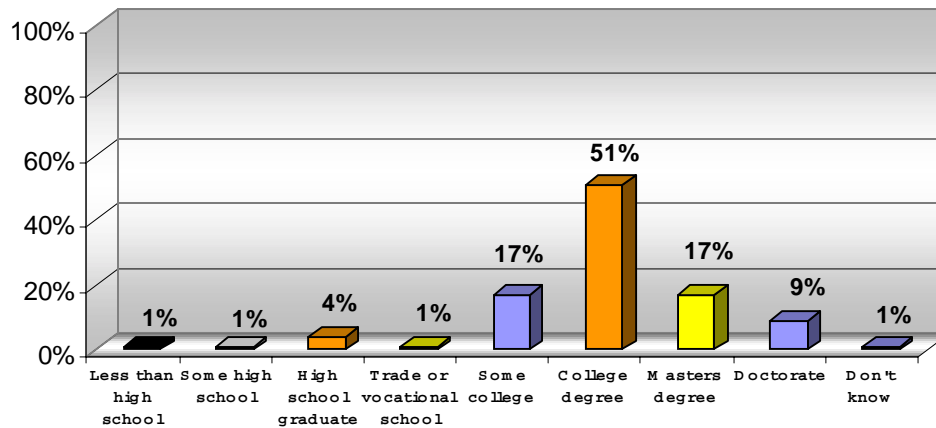
If married, is your spouse employed? (Q73)



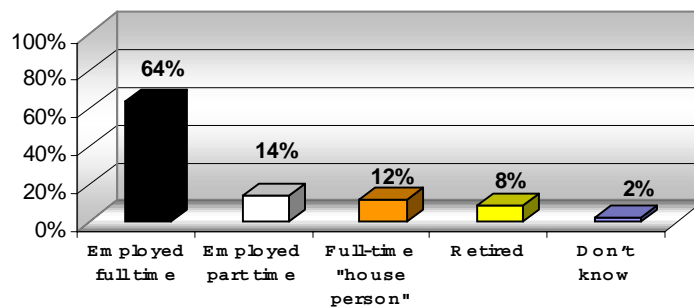
How many children do you have in each of the following age groups? (Q74)



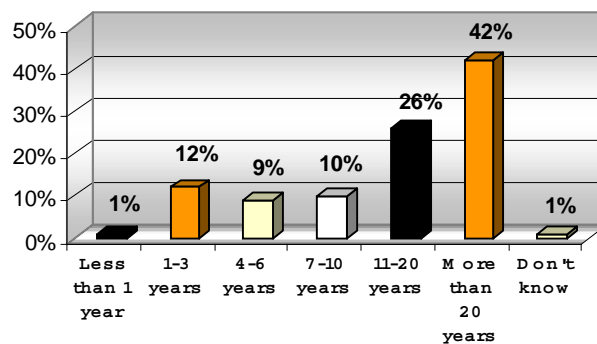
What is your highest level of formal education? (Q75)



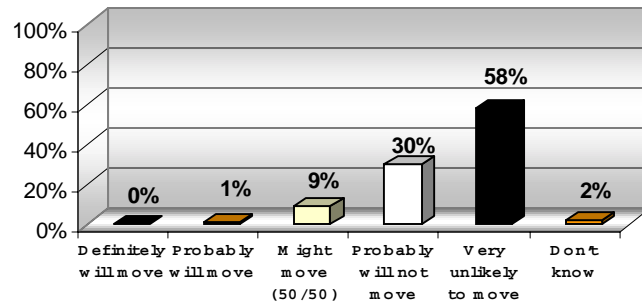
Are you? (Q76)



How many years have you lived in this general area? (Q77)



How likely is it that you might move out of this general area within the next three years? (Q78)



Strategic Planning (Q79)	
Mark and the Elders have told the congregation that they are considering the possibility of a capital campaign (no sooner than Fall 2003) that would eliminate our bond debt and provide for additional parking and building space. Which of the following statements best represents your point of view at this time?	%
I would enthusiastically support such a capital campaign.	33%
I would not support a capital campaign	12%
I do not know enough to form an opinion at this time.	53%
Don't know	3%

Strategic Planning (Q80)	
While we are in a one-service format on Sunday mornings, which of the following represents your scheduling preference?	%
I want to keep our current schedule: class at 9:25 and worship at 10:25.	56%
I would like to change the schedule: class at 9:00 and worship at 10:00.	41%
Don't know	4%